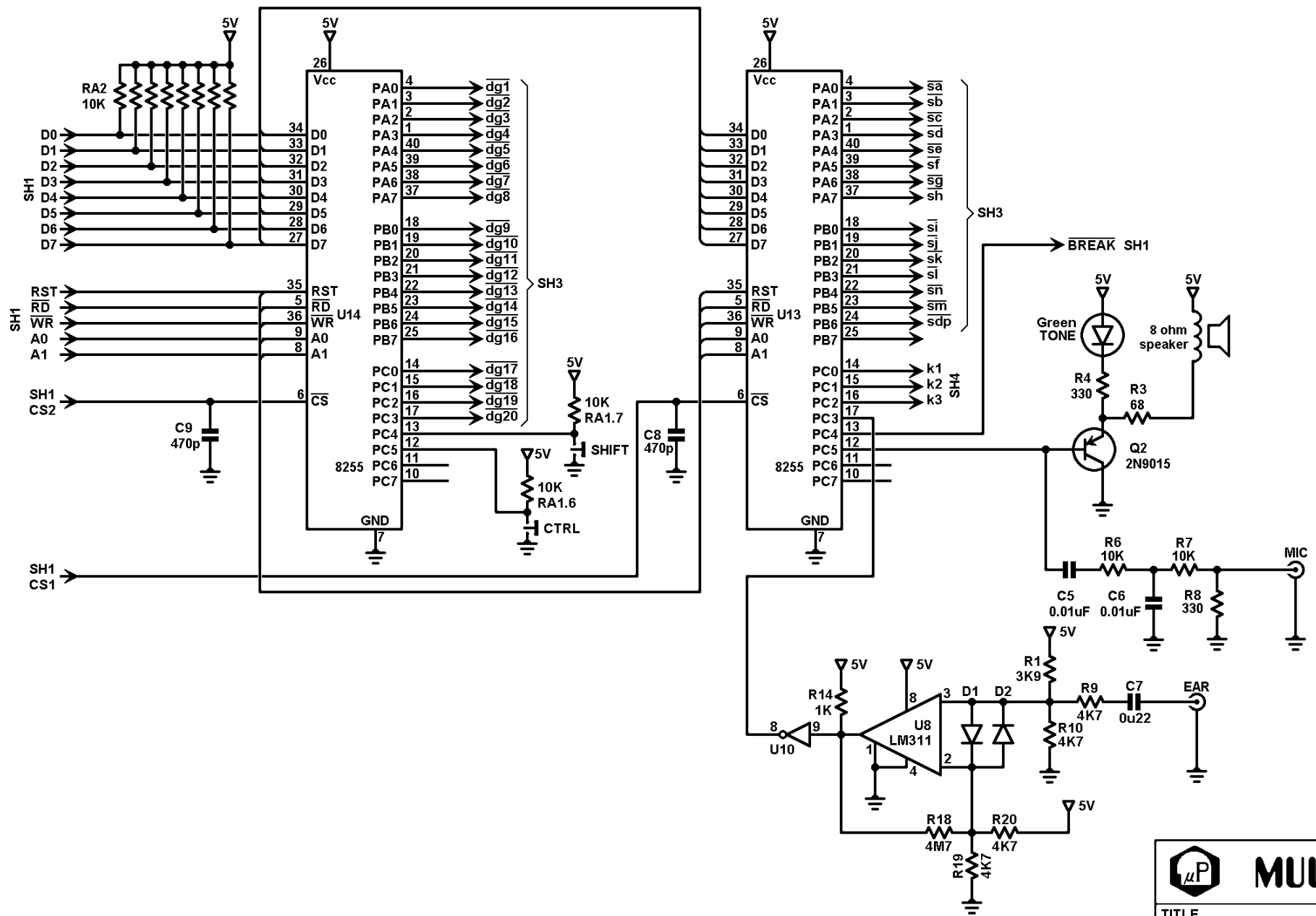

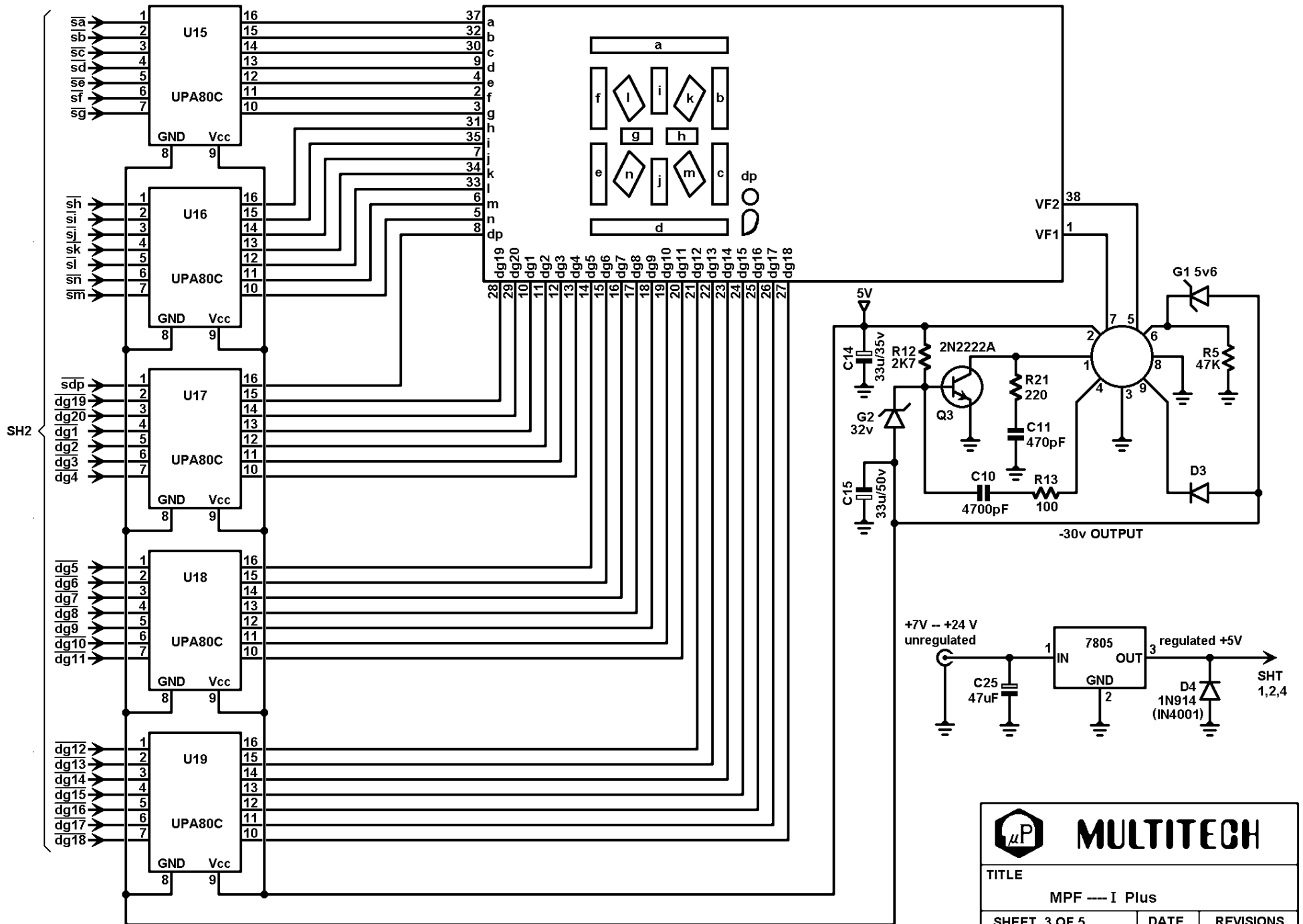

 <b>MULTITECH</b>		
TITLE		
MPF ---- I Plus		
SHEET 1 OF 5	DATE	REVISIONS
DRAWING NO.	10/21/82	A



 <b>MULTITECH</b>		
TITLE MPF ---- I Plus		
SHEET 2 OF 5	DATE	REVISIONS
DRAWING NO.	10/21/82	A



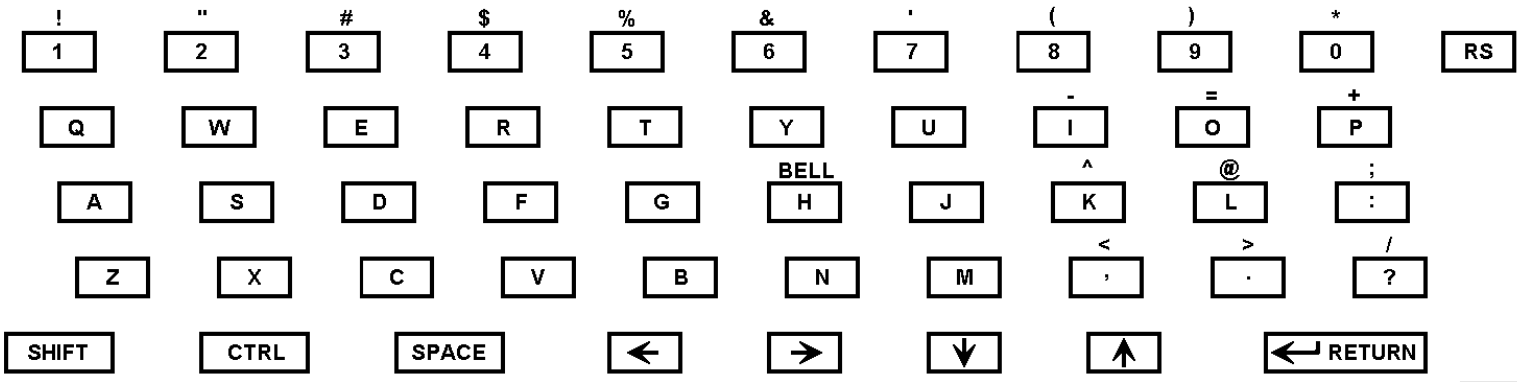
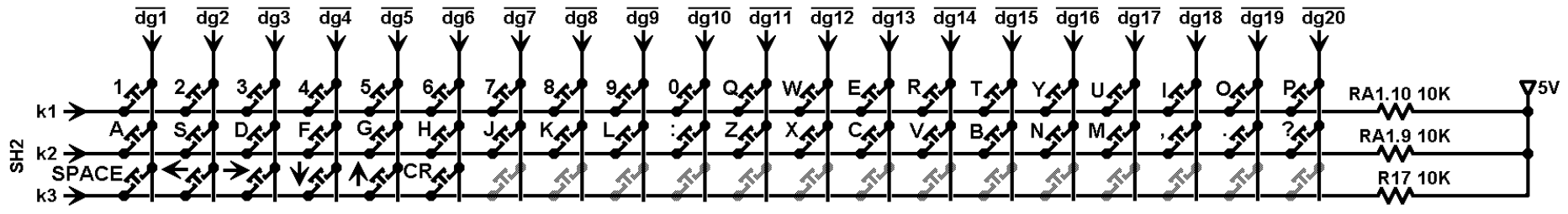
SH2




## MULTITECH

TITLE  
MPF ---- I Plus

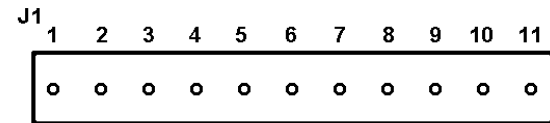
SHEET 3 OF 5	DATE	REVISIONS
DRAWING NO.	10/21/82	A



 <b>MULTITECH</b>		
TITLE MPF ---- I Plus		
SHEET 2 OF 5	DATE	REVISIONS
DRAWING NO.	10/21/82	A

J1		FUNCTION	
PIN NO.	SIGNAL	PIN NO.	SIGNAL
1	A11	21	A10
2	A12	22	A9
3	A13	23	A8
4	A14	24	A7
5	A15	25	A6
6	CK	26	A5
7	D4	27	A4
8	D3	28	A3
9	D5	29	A2
10	D6	30	A1
11	NC	31	A0
12	D2	32	GND
13	D7	33	$\overline{\text{RFSH}}$
14	D0	34	$\overline{\text{M1}}$
15	D1	35	$\overline{\text{RESET}}$
16	$\overline{\text{INT}}$	36	$\overline{\text{BUSRQ}}$
17	$\overline{\text{NMI}}$	37	$\overline{\text{WAIT}}$
18	$\overline{\text{HALT}}$	38	$\overline{\text{BUSAK}}$
19	$\overline{\text{MREQ}}$	39	$\overline{\text{WR}}$
20	$\overline{\text{IORQ}}$	40	$\overline{\text{RD}}$

J1		J2	
PIN NO.	SIGNAL	PIN NO.	SIGNAL
1	Q5 - C	1	Q5 - C
2	U12 - 4	2	U12 - 4
3	U12 - 10	3	U12 - 10
4	U4 - 20	4	U4 - 20
5	U4 - 18	5	U4 - 18
6	$\overline{\text{WR}}$	6	$\overline{\text{WR}}$
7	A11	7	A11
8	U4 - 21	8	U4 - 21
9	U5 - 20	9	U5 - 20
10	U5 - 18	10	U5 - 18
11	U12 - 9	11	U12 - 9

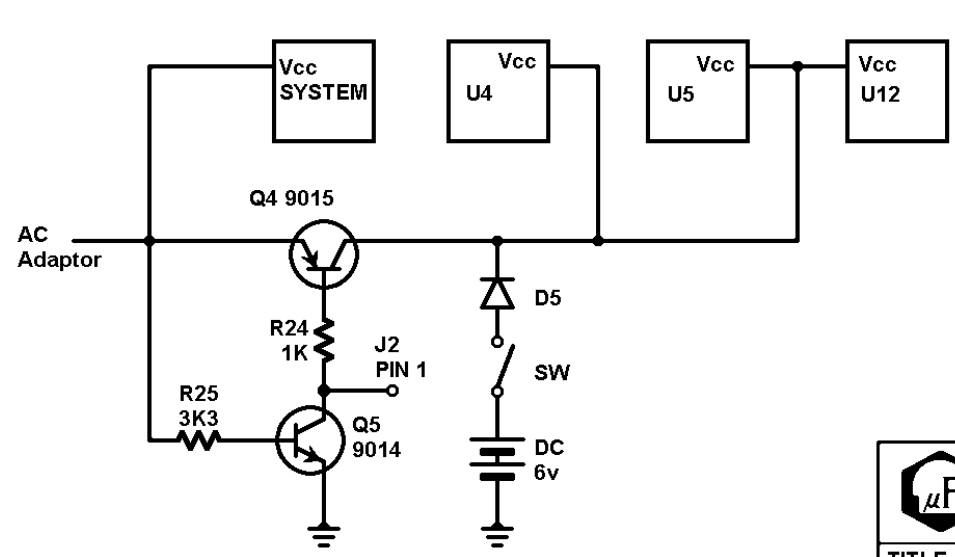
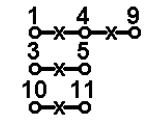


U4 U5 Default connection is designed for 6116

J2 PIN 1,4,9 Short  
 PIN 3,5 Short  
 PIN 6,8 Short  
 PIN 10,11 Short

If users want to change 6116 into 5516 connection for lower power battery backup

first cut PIN 1,4,9  
 PIN 3,5  
 PIN 10,11  
 second connect PIN 1,5,10  
 PIN 3,4  
 PIN 9,11



SW	Description
ON	auto battery back up
OFF	No battery backup

**MULTITECH**

TITLE  
MPF -- I Plus

SHEET 5 OF 5	DATE	REVISIONS
DRAWING NO.	10/21/82	A