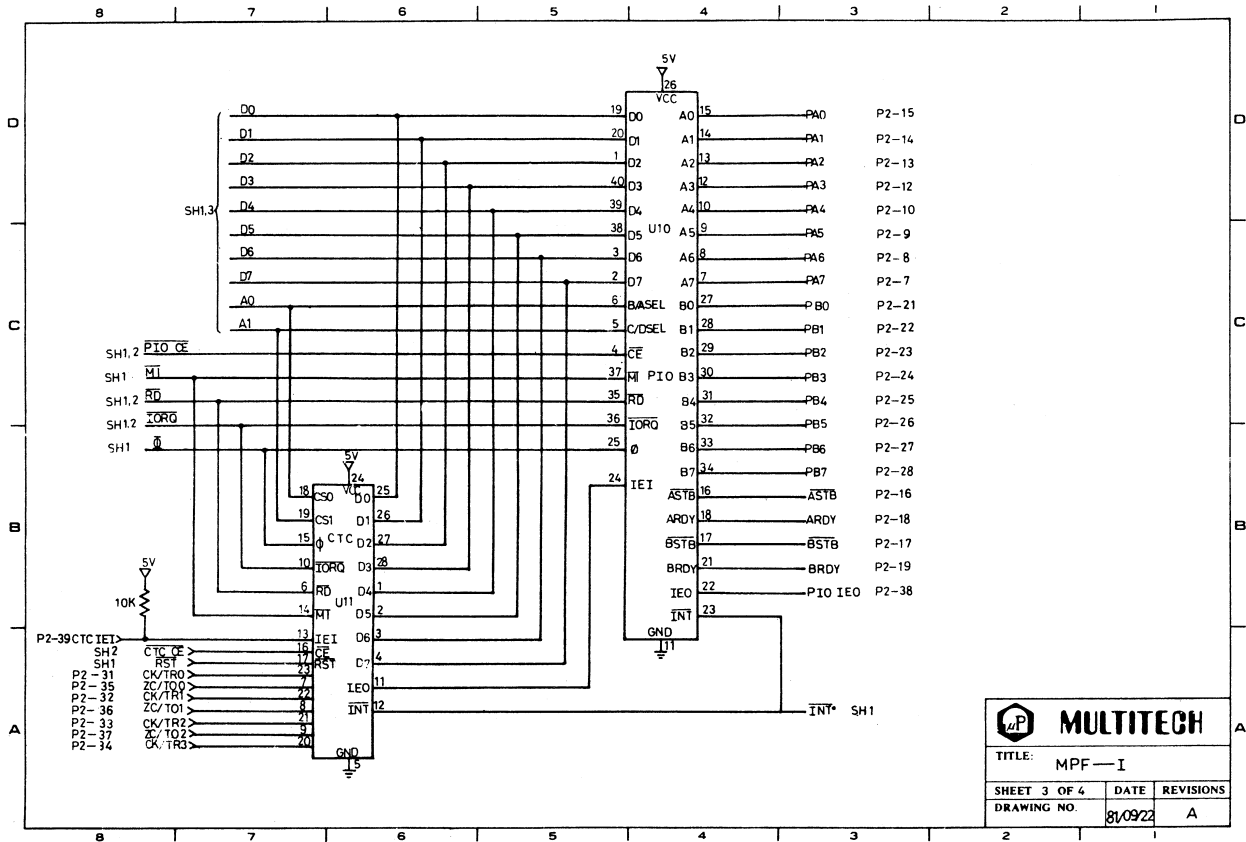



TITLE: MPF—I	
SHEET 1 OF 4	DATE
DRAWING NO.	REVISIONS
810922	A



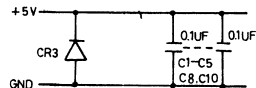
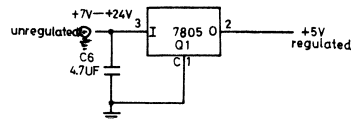
 MULTITECH		
TITLE: MPF-1		
SHEET 3 OF 4	DATE	REVISIONS
DRAWING NO.	8/10/22	A

P1 PIN FUNCTION

PIN NO	SIGNAL	PIN NO	SIGNAL
1	A11	21	A10
2	A12	22	A9
3	A13	23	A8
4	A14	24	A7
5	A15	25	A6
6	A	26	A5
7	D4	27	A4
8	D3	28	A3
9	D5	29	A2
10	D6	30	A1
11	NC	31	A0
12	D2	32	GND
13	D7	33	REFSH
14	D0	34	MT
15	D1	35	RESET
16	INT	36	BUSRO
17	NMI	37	WALT
18	HALT	38	BUSAK
19	MREQ	39	WR
20	TOR0	40	RD

P2 PIN FUNCTION

PIN NO	SIGNAL	PIN NO	SIGNAL
1	NC	21	PB0
2	NC	22	PB1
3	NC	23	PB2
4	NC	24	PB3
5	NC	25	PB4
6	NC	26	PB5
7	PA7	27	PB6
8	PA6	28	PB7
9	PA5	29	NC
10	PA4	30	GND
11	GND	31	CK/TR0
12	PA3	32	CK/TR1
13	PA2	33	CK/TR2
14	PA1	34	CK/TR3
15	PA0	35	ZC/TO0
16	ASTB	36	ZC/TO1
17	BSTB	37	ZC/TO2
18	ARDY	38	PIO IEO
19	3RDY	39	CTC IEI
20	NC	40	NC



NOTE: 1. U7 is optional, it may be 2516, 2716, 2532, 2732, 6116

2. Jumper 1 is used for selecting certain memory type

Memory Type	Memory Address	Cuts	Jumpers
2516 2716	2000-27FF	NIL	NIL
2532	2000-2FFF	NIL	NIL
2732	2000-2FFF	PIN1 TO PIN2 PIN3 TO PIN4 PIN5 TO PIN6	PIN2 TO PIN3 PIN4 TO PIN5 PIN6 TO PIN7
6116	2000-27FF	PTN3 TO PTN4	PTN4 TO PTN5

*PIN 3 - PIN 2
PIN 5 - PIN 4
PIN 6 - PIN 7*



MULTITECH

TITLE: PF—I

SHEET 4 OF 4	DATE	REVISIONS
DRAWING NO.	8/09/22	A